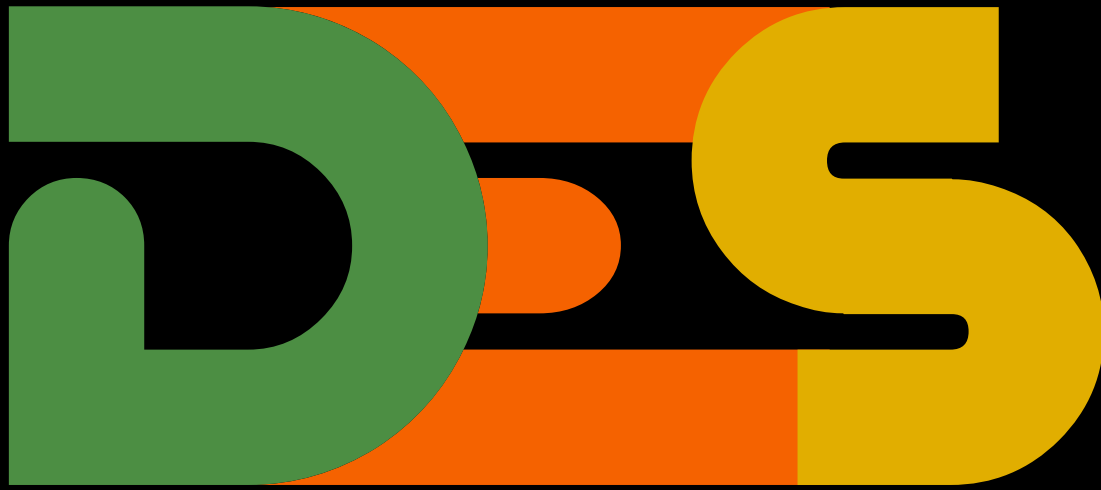




Africa Dyslexia  
Organisation



BRITISH  
COUNCIL



# Dyslexia Education Stakeholders

FORUM 2023

**Theme: Rethinking Inclusivity in Education,  
Addressing the Needs of Dyslexic Students**

# Introduction

Dyslexia is a neurodevelopmental condition impacting individuals' reading, writing, and spelling abilities, with 1 in 5 individuals affected, making it a prevalent yet often overlooked learning challenge in Africa. To address this gap, the Africa Dyslexia Organisation in 2022 launched the Dyslexia Education Stakeholders Forum.

This forum serves as a catalyst for change, engaging key decision-makers in education, such as school directors, owners, policymakers, parents, and diverse stakeholders. Acknowledging the significance of dyslexia education, the forum strives to establish a collaborative platform where stakeholders can unite to discuss challenges, share expertise, and develop innovative solutions.

Africa Dyslexia Organisation in partnership with the British Council presents the 2023 edition of the Dyslexia Education Stakeholders Forum.

## Theme: Rethinking Inclusivity in Education, Addressing the Needs of Dyslexic Students

### The Creative Mind of Dyslexics Panel:

Explore the experiences, challenges, and extraordinary strengths of dyslexic individuals.

### Rethinking Inclusivity in Education Panel:

Will dive into best practices, methodologies, and policies that foster an inclusive educational environment. Learn how inclusivity benefits all students.

### Assessment, Intervention & Parenting Panel:

Understand the crucial role of parents in supporting dyslexic students and the significance of timely assessments.

## Objectives:

**Knowledge Exchange:** Facilitate the exchange of best practices, and success stories in dyslexia education among stakeholders.

**Awareness Building:** Increase awareness among educators, parents, policymakers, and professionals about the impact of dyslexia on learning and development.

**Collaboration:** Encourage interdisciplinary collaboration to enhance support systems and interventions for individuals with dyslexia.

**Policy Advocacy:** Discuss and advocate for inclusive policies that address the needs of dyslexic individuals in educational settings.

**Format:** The forum will consist of keynote presentations and panel discussions. Participants will include dyslexic individuals, students, educators, researchers, parents, policymakers, professionals involved in dyslexia education and all other stakeholders interested in education.

# Expected Outcomes:

**Increased Awareness:** Contribute to increased public awareness about dyslexia and the importance of inclusive education.

**Actionable Strategies:** Develop and disseminate actionable strategies and resources for educators, parents, and policymakers.

**Networking:** Build a strong network of dyslexia education advocates and professionals for ongoing collaboration.

**Policy Recommendations:** Formulate policy recommendations based on discussions and insights shared during the forum.

## Conclusion

The Dyslexia Education Stakeholders Forum aims to be a catalyst for positive change in dyslexia education by fostering collaboration, knowledge exchange, and advocacy. Through collective efforts, ADO uses the forum to create awareness on inclusion for all learners.

# Agenda

## **8am-9am**

Arrival of Stakeholders

## **9am-9:5am**

Introduction by MC - **Kwame AA Opoku & Tonisha Tagoe**  
1 Minute Silence Prayer in each other's believe

## **9:05am-9:10am**

Piano Performance by **Abriana Ablorh-**  
13 Years Dyslexic, student & an artist of Eastern Heroes  
International School.

## **9:10am-9:25am**

Introduction of Chairperson and Word from Chairperson  
**Yawa Hansen-Quao**, Founder & Executive Director  
Leading Ladies Network

## **9:15am-9:25am**

Opening Address- **Rosalin Abigail Kyere-Nartey**,  
Founder & Executive Director, Africa Dyslexia Organisation

## **9:25am-9:30am**

Opening Address- British Council

## **9:30-9:40am**

Keynote Address on behalf of the Deputy Minister of  
Education (Hon. John Ntim Fordjour):  
**Sheila Naah Boamah**, Technical Director on General Education

## **9:40-9:45**

Introduction of **Dyslexic Panel and Topic Area of focus.**

# Panel Sessions

**9:45–10:35 (50 Minutes)**

## The Creative Mind of Dyslexics

(Moderated by Ethel Obeng-Treve –  
Clinical Psychologist, Children and Adolescent Specialist)

**Okyeame Kwame** – Musician,

**Sarah Emefa King**– Psychology Student & Artist,

**Nana Ansah Kwao IV**- Radio Broadcaster & Chief of Akwamu Adumasa,

**Rev. Johnnie Oquaye**- Founder-TAF Collage

**10:35-11:00pm**

Q & A

**11:00-11:15 am**

Coffee Break

**11:15-11:20am**

Solidarity Message by UN Resident Coordinator: **Mr. Charles Abani**

**11:25-12:15 pm**

## Introduction of Assessment, Intervention and Parenting Panel and Topic Area of Focus

(Moderated by Ama Asamoah – Dyslexic & Co-Founder of Pattron)

**Joy Thomas**– Executive Director- Dyslexia Ghana,

**Dorcias Ablorh**- Parent to a Dyslexic Champion & Entrepreneur,

**Godwin Adu-Afful**-Lecturer & Memory Trainer,

**Nathalie Ocean**-Edmud- Parent to a Dyslexic Champion  
& Family Therapist.

**12:15-12:40 pm**

Q & A

**12:45-1:15 pm**

Lunch Break and Networking:

**1:15-2:15 pm**

### **Introduction of Rethinking Inclusivity in Education Panel**

(Moderated by **Dr. Evelyn Kissi**

Special Education Consultant and Lecturer -University of Ghana )

**Daniel Dotse** - Co-Founder & Chief Executive Director  
Lead for Ghana,

**Dr Fatma Odaymat** – Director, AlRayan International School,

**Alex Amankwah**, Officer in Charge of Learning Disabilities  
SPED Division of the Ghana Education Service,

**Ms. Sonia Aboagye**- Principal-MultiKids Inclusive Academy,

**Peter Anum** -Inclusive Education Consultant for British Council

**2:15 to 2:45pm**

Q & A

**2:45 to 2:55 pm**

Closing remarks by Madam Chairperson,  
followed by **Rosalin Abigail Kyere-Nartey**

**2:55 to 3:00pm**

MC lead participants to take survey

Thanking all partners, volunteers and supporters and  
Group Picture taking

**Event Close but networking Continue**

## Futurist Kwame Opoku



**Kwame A.A Opoku** is an Award-Winning Futurist, Global Business Keynote Speaker, and 4x Tedx Speaker. Recognized as a leading mind in Blockchain Technology and Web 3.0, he has received numerous accolades, including being named in the TOP 40 Most Influential People of African Descent and the 100 Most Influential Young Africans.

As the CEO of Ex Ventures, he oversees Global Blockchain Events and Kronos Labs, a Web 3.0 & Crypto Incubator. Kwame is also the global lead of RESET GLOBAL PEOPLE, a prominent agency focused on youth engagement.

He is a dynamic millennial, an itinerary speaker on emerging technologies, and the founder of the Ghana AI & Blockchain Forum.

## Tonisha Tagoe

Dyslexic and Board Member of Africa Dyslexia Organisation



Enterprise Education Specialist Apples and Pears Ltd

Over the past 21 years, Tonisha has developed a bespoke methodology for supporting clients through the 'Five Stages of Growth', providing the necessary tools and resources for those eager to evolve on their journey to success.

Employing the science of creativity, this person guides leaders through the processes of ideation, validation, and implementation, enabling them to transform each idea into a profitable and sustainable outcome.

## Sign Language Interpreters



**Martin Attakwasi Nyamekye** -  
The Bible Society of Ghana



**Joseph Yayarator Kofi Mensah** -  
Multikids Inclusive Academy

## Abriana Ablorh

Student Eastern Heroes International



She is a resilient 13-year-old who discovered her strength amidst challenges when her parents identified her dyslexia three years ago. Despite academic hurdles, Abriana shines as a multitalented individual. A gifted pianist, skilled artist, and budding fashion designer, she pours her creativity into various outlets.

Abriana's diverse passions reflect her determination to overcome obstacles and embrace her unique talents. Join us as she graces our event with a captivating piano performance, showcasing the extraordinary abilities within every child.



## Yawa Hansen-Quao

Founder & Executive Director- Leading Ladies Network



For over a decade, Yawa Hansen-Quao has worked to unlock opportunities for women and youth in Africa. Through the Leading Ladies Network, Yawa has fostered an ecosystem of women and girls who have ambitious goals, strong character and resolve to serve as impactful leaders in business, civil society, and government. In May 2012, at the World Economic Forum on Africa, Yawa was recognized as one of Africa's Rising Leaders and in 2016 was awarded an Eisenhower Fellowship in honor of her pioneering work nurturing emerging women leaders.

From July 2018 to June 2022, Yawa served as Executive Director for Emerging Public Leaders—an international nonprofit committed to driving Africa's development by creating a new generation of public servants committed to social impact.. During her tenure, Yawa led EPL's expansion across West and East Africa while catalyzing \$16million USD in support of the organization's pan-African expansion plans

.In addition to being a founder, speaker, and author, Yawa served for three years on the World Economic Forum's Global Shapers Foundation board; and is currently a Director of Legacy Girls College; a leading girls secondary school in Ghana. She previously served as a leadership consultant to UN Women helping to develop leadership curricula to enhance the capacity of women leaders in East and Southern Africa. Additionally, Yawa served for two years as a member of the Advisory Board of the Women's Institute for Global Leadership at Benedictine University.

## Rosalin Abigail Kyere-Nartey

Founder & Executive Director- Africa Dyslexia Organisation



Rosalin is an unwavering advocate for dyslexic individuals and the Executive Director of Africa Dyslexia Organization (ADO), non-profit organization is dedicated to raising awareness, advocacy, providing essential educational tools to teachers and parents, and offering support for individuals grappling with dyslexia and related learning disabilities.

Rosalin holds an MSc in International Hospitality Management from Swiss Hotel Management School in Switzerland. She is a Walt Disney Hospitality Leadership Fellow with 17 years experience in the hospitality industry both in Ghana, Europe and USA. She is currently a Lead Consultant at iQ Mundo and Country Rep for Swiss Education Group in Ghana, Liberia and Sierra Leone. Her multifaceted expertise and her commitment to inclusive education position her as a beacon of hope, igniting positive change for dyslexic individuals across Africa.



## Keynote Speaker

### Honorable Reverend John Ntim Fordjour

Deputy Minister for Education



John Ntim Fordjour is a politician, Mineral Engineer, entrepreneur, legislator and ordained Reverend Minister. He has a multifaceted background in Engineering, Mining, International Relations and Economic Policy.

He's a second term Member of Parliament for Assin South Constituency in the Parliament of Ghana and serves as Deputy Minister for Education. Fordjour focuses on supporting the Minister to drive education transformation at the pre tertiary level with particular passion for foundational learning, STEM and inclusive education.

With a prior sterling career in mining industry, he served as the Human Resources Superintendent of Gold Fields Ghana Ltd, Tarkwa Mine - the biggest surface mine in West Africa at age 24, where he creditably delivered the Owner Maintenance Transition Project by setting up a newly created Heavy Mining Equipment department with 465 expatriate and critical skill national employees.

### Mr. Charles Abani

UN Resident Coordinator



Mr. Charles Abani is a seasoned international development practitioner with over 25 years of experience in the public, private and non-profit sectors having worked in senior country and regional leadership roles in Africa, Asia, and in Europe.

Specifically, he has worked with ActionAid International, Oxfam GB, Absolute Return for Kids, Palladium and Chemonics. Mr. Abani has also led the successful implementation of projects for DFID and USAID. Most recently, Charles served as Africa Director in Chemonics' UK Division, prior to which he led USAID' flagship civil society project in Nigeria – USAID-SACE.

# Profiles for Panels

## TOPIC The Creative Mind of Dyslexics Panel

### PANELISTS

### Moderator



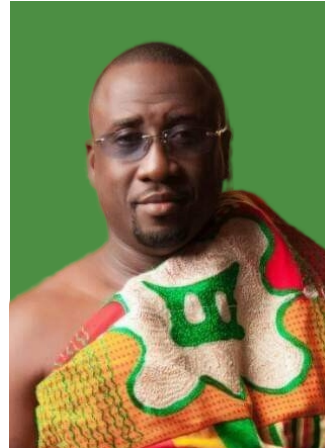
**Rev. Johnnie Oquaye**  
Founder - TAF Collage



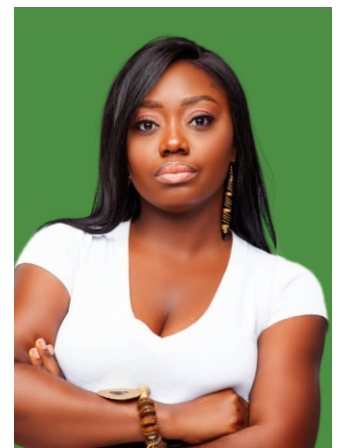
**Okyeame Kwame**  
Musician



**Sarah Emefa King**  
Psychology Student & Artist



**Nana Ansah Kwao IV**  
Chief of Akwamu Adumasa



**Ethel Obeng-Treve**  
Clinical Psychologist

Dyslexic individuals often face challenges in traditional learning environments due to difficulties with reading, spelling, and processing written information. However, many exhibit extraordinary strengths, such as enhanced spatial reasoning, creativity, and problem-solving skills. Understanding their unique perspectives involves recognizing the diversity of talents within the dyslexic community and appreciating the innovative ways they approach tasks and solve problems. Empathy, tailored support, and highlighting strengths can empower dyslexic individuals to excel in various aspects of life.

### Moderator



**Ethel Obeng-Treve**  
Clinical Psychologist

**Mrs Ethel Obeng-Treve** is a registered clinical psychologist and consultant with specialized training working with children and adolescents. She has a breadth of experience working extensively with adults, couples and families from a multicultural setting. Ghana and UK trained, Ethel is an expert in patient assessment, intervention, counselling and behaviour modification. She is passionate about the wellbeing of children and adolescents - closely working with families, schools and the community to achieve success.

Ethel runs an NGO called Fafanto Psych Consult with the aim of promoting mental health, reducing stigma around mental illness, and providing trustworthy mental health support. She also works as a counsellor at Lancaster University Ghana and consults for several healthcare facilities.

Ethel is a researcher interested in suicide among the youth and gatekeeping, sexual abuse and spirituality/religion and its impact on mental health.

Ethel is also a Radio Show Host at Starr FM 103.5 (Family Central)

**Rev. John Nii Oquaye** is a visionary Social Entrepreneur, Baptist Minister, Founder and President of TAF College (A Business School for Creative People) with a three-fold mission: (i) Alleviating Poverty, (ii) Providing quality education for creative individuals to become world-class freelancers, and (iii) Fostering the empowerment of women in the creative arts industry.

His journey as a dyslexic individual drives his advocacy for a practical shift in education, focusing on hands-on learning. As the founder of Women in Creativity Africa (WICA), he champions women's empowerment by offering tuition-free training in various creative fields. Rev. Oquaye's mission is to empower individuals in Africa to become creative freelancers, fostering financial prosperity through practical education.

His vision is to transform TAF College into an accredited University for creative people, offering a well-rounded education. Leadership within TAF College and WICA prioritizes inclusive learning for all, emphasizing support for students with learning differences, nurturing soft skills, fostering entrepreneurship, promoting digital literacy, challenging gender biases, and ensuring equal opportunities for everyone.



**Rev. Johnnie Oquaye**  
Founder - TAF Collage



# Profiles for Panels

## TOPIC The Creative Mind of Dyslexics Panel

**Kwame Nsiah-Apau**, renowned by his stage name "Okyeame Kwame," is a prominent Ghanaian musician and author. Notably, he serves as a Climate Change Ambassador/Activist, Climate Clock Ambassador, Made In Ghana Ambassador, and Read Ambassador for WorldReader. Despite facing severe dyslexia-related challenges in school, Okyeame Kwame has transcended expectations. Once deemed unlikely to achieve success, he has not only proven skeptics wrong but has also made substantial contributions to both his personal growth and the betterment of Ghana. Today, Okyeame Kwame stands as a testament to resilience and achievement, having overcome educational obstacles. His multifaceted roles, from his impactful musical career to his advocacy for climate change and literacy, showcase his dedication to making a positive impact in various spheres. Okyeame Kwame's journey from adversity to accomplishment serves as an inspiration, emphasizing the transformative power of determination and perseverance.



**Okyeame Kwame**  
Musician



**Sarah Emefa King**  
Psychology Student & Artist

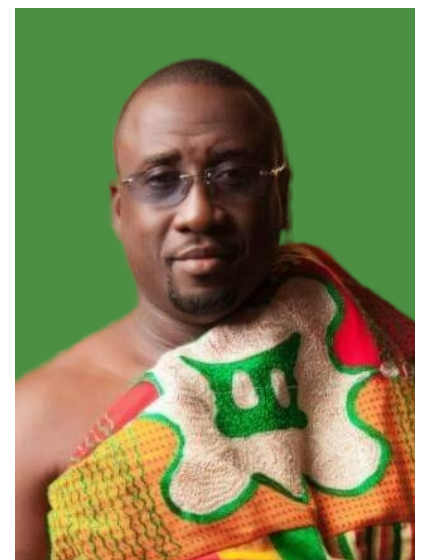
**Sarah Emefa King**, a final-year Psychology student at Webster University, is deeply passionate about art therapy and inclusive education. Her journey began in high school when she initiated a project that took her across Ghana, offering transformative art workshops to children. This experience ignited her passion and laid the foundation for co-founding the Emefa Art Workshop, an organisation dedicated to engaging children through the power of art.

In these workshops, Sarah, who is dyslexic, uses visualisation, creativity, and affirmations to nurture the artistic minds of young learners. As an upcoming committed abstract artist, she has hosted four successful exhibitions, showcasing her unique talents and creative expressions to the world.

Sarah's personal journey, marked by her own experience with dyslexia, has given her a deep understanding of the challenges neurodiverse individuals face. Her multicultural background, blending Ghanaian and Brazilian heritage, enriches her perspective and informs her work.

**Nana** stands as a remarkable figure and development leader, leaving an indelible mark on both the community and the wider world. Overcoming the challenges of dyslexia, he evolved into a distinguished radio broadcaster and journalist, defying early labels of being "uneducable." His journey serves as an inspiring narrative, and Nana actively utilizes his story to raise awareness about dyslexia.

Beyond his impactful career in broadcasting, Nana Ansah Kwao IV is a change-maker, spearheading development initiatives that have brought about significant positive changes in Akwamu Adumasa. His visionary leadership has made him a driving force in the community's progress. Through his multifaceted contributions as a development leader and a dyslexia awareness advocate, Nana Ansah Kwao IV continues to inspire, motivate, and shape positive transformations in Ghana and beyond.



**Nana Ansah Kwao IV**  
Chief of Akwamu Adumasa

# Profiles for Panels

## TOPIC Assessment, Intervention & Parenting Panel

### PANELISTS

### Moderator



**Dorcas Ablorh**  
Director - Adjoor Venture



**Godwin Adu-Afful**  
Lecturer, Memory Trainer,  
and Author



**Joy Thomas**  
Executive Director-Dyslexia,  
Ghana



**Nathalie Ocran-Edmund,**  
Training Psychologist and Family  
Therapist, LEKMA Hospital



**Ama Asamoah**  
Dyslexic, Co-Founder - Patron

Parents play a vital role in supporting dyslexic students by providing emotional support, advocating for appropriate resources, and fostering a positive attitude toward learning. Timely assessments are crucial to identify dyslexia early, allowing for tailored interventions and support that can significantly improve academic outcomes. Collective efforts can make a significant difference by pooling resources, sharing expertise, and fostering a sense of community. When individuals, organizations, and communities unite towards a common goal, they can create positive change, tackle complex issues more effectively, and amplify their impact for the betterment of society as a whole.

### Moderator



**Ama Asamoah**

Dyslexic, Co-Founder - Patron

**Ama Asamoah** is a passionate entrepreneur and advocate for diversity and inclusion. She has overcome challenges, including dyslexia, to pursue her dreams and create opportunities for others.

Ama is the founder of Shifting Perspectives and PATTRON, two thriving companies that prioritize empowering individuals from marginalized backgrounds. Her journey is an inspiring testament to resilience and the belief that everyone deserves a chance to shine.

**Dorcas Borley Ablorh**, the CEO of Adjoor Ventures, overseeing the distribution of Royal Atlantic Tuna, is a multifaceted individual with diverse talents and a heart for community service. Beyond her corporate role, Dorcas is a seasoned singer and child coach, bringing over a decade of experience in training and nurturing children aged 4 to 12 within her community.

As a proud mother of a dyslexic child, Dorcas finds fulfillment in sharing her experiences and insights. Through her journey, she seeks to offer support and guidance to fellow parents navigating similar challenges. Dorcas's commitment to both her professional endeavors and her advocacy for parents of dyslexic children reflects her dedication to making a positive impact in both the business and personal spheres of her life.



**Dorcas Ablorh**  
Director - Adjoor Venture



# Profiles for Panels

## TOPIC Assessment, Intervention & Parenting Panel

**Godwin Adu-Afful**, professionally known as Gord-Afful, is a versatile and sought-after professional with a wealth of experience in various domains. He is a Lecturer at KNUST, a shrewd Memory Trainer, and a Motivational Speaker. Additionally, he is a Project Management Consultant and a successful Entrepreneur.

He is driven by a strong passion for empowering young individuals in discovering and harnessing their innate talents and abilities. Under his mentorship and support, many young individuals have emerged as influential agents of positive transformation and change. Gord-Afful is a passionate researcher in the area of Educational Neuroscience. He upholds the philosophy that there is no such thing as a bad brain since the human brain possesses remarkable plasticity --- and can adapt and grow through learning and training. He firmly believes in the power of training the mind and provides science-based techniques that enhance cognitive abilities.

Gord-Afful is also an author and his debut book, "30-7-7 Secrets to Learning", is helping many schools in Ghana and providing guidance to students worldwide on effective learning methods. He has conducted sessions on TV and radio, as well as in various schools, equipping students with learning strategies and tips for passing exams.



**Godwin Adu-Afful**  
Lecturer, Memory Trainer,  
and Author



**Joy Thomas**  
Executive Director-Dyslexia,  
Ghana

**Joy Thomas**, founder and Director of Dyslexia Ghana and the Neurodiversity International Centre, boasts a diverse academic background with an M.Sc in Psychology, CCET, PGCE, and B.Sc in Social Work. As the sole Davis Facilitator in Ghana and West Africa, she brings specialized expertise to her work.

A member of The British Dyslexia Association and The British Psychological Society, she actively connects with international networks. Offering face-to-face and online services for both adults and children, Thomas focuses on assessing and supporting individuals with dyslexia, dyscalculia, dyspraxia, and dysgraphia.

Her over 20 years commitment significantly contributes to neurodiversity awareness and support in the region.

**Nathalie** came to the field of psychology and family therapy at a later stage in her professional life after having worked in the field of international development, project and human resource management.

As the mother of two neurodiverse children, she was naturally pulled into this very fascinating world of children with neurodevelopmental disorders such as dyslexia. She discovered alongside her children the struggle, the pain and the complexity of growing up as a neurodiverse child in a world that caters primarily for neurotypical people. She experienced first-hand how the education system can destroy the potential and bright future of neurodiverse children and how the lack of understanding of neurodiversity can negatively affect families. As a result, Nathalie saw it as a calling to go back to school and to reorient her professional career so as to support not only her children but also other children and families struggling to come to terms with not fitting within the norms of society.

Nathalie holds an MSc in Applied Psychology from Robert Gordon University (Scotland) and is currently training to become a family therapist. She hopes to contribute to changing the narrative which focuses more on the impairments of neurodiverse children and adults towards a more inclusive and supportive narrative that celebrates and recognizes their strengths and abilities



**Nathalie Ocran-Edmund**,  
Training Psychologist and Family  
Therapist, LEKMA Hospital

# Profiles for Panels

## TOPIC Rethinking Inclusivity in Education Panel

### PANELISTS

### Moderator



**Daniel Dotse**  
Co-Founder and CEO,  
Lead For Ghana (LFG)



**Dr Fatma Odaymat**  
Director, Al-Rayan International  
School



**Alex Amankwah**  
Officer in charge of Learning  
Disabilities Special Education  
Division, GES



**Sonia Aboagye**  
Principal, Multikids Inclusive  
Academy



**Dr. Evelyn Kissi**  
Lecturer - University Of Ghana

Best practices for fostering an inclusive educational environment involve implementing Universal Design for Learning (UDL), promoting diverse representation in curriculum and resources, and providing professional development for educators on inclusive teaching methods. Methodologies include differentiated instruction, peer support, and collaborative learning. Policies should emphasise equal access, anti-discrimination measures, and accommodations for diverse learning needs, creating a framework that ensures inclusivity for all students.

### Moderator



**Dr. Evelyn Kissi**  
Lecturer - University Of Ghana

**Dr. Evelyn Folake Kissi**, a highly regarded African scholar with citizenship in Ghana, Nigeria, and Canada, specializes in the convergence of Black Critical Disability, Black Global Health, and Early Childhood Development Studies and Education.

With a career spanning 25 years, she has collaborated globally with organizations in Africa, North America, and Europe. Dr. Kissi holds a doctorate in Critical Disability Studies from York University, Toronto, and an MA focusing on Early Childhood Education, inclusion and policy. Her professional journey includes training on confronting Anti-Black Racism, inclusive education, consultancy roles with grassroots organizations, and managing programs for homeless youth shelters dealing with addiction issues.

She contributed to the Black Health Matters COVID-19 research project and served as a Professor in the Child Development program at Seneca College and Humber College, Toronto. As an Educational Specialist and Early Interventionist Consultant, Dr. Kissi is dedicated to fostering inclusive environments in schools, reflecting her commitment to advancing inclusive education, African disability justice, and community well-being through her role as Founder and Partner at Dr. Kissi and Partners Consulting.

**Daniel Dotse** is the Co-founder and CEO of Lead For Ghana (LFG). Prior to launching LFG, Daniel worked as a biotechnologist at Regeneron Pharmaceuticals. Before he ventured into the pharmaceutical world, Daniel studied biomedical engineering at Cornell University with a keen interest in nanotechnology. Daniel's Cornell education was made possible by the Lester B. Knight Scholarship for bright students with a keen interest in engineering and business.

The scholarship's impact went beyond the financial freedom to pursue his passions, and Daniel was compelled and motivated to explore ways he could positively impact others in the way that the scholarship opportunity opened up doors for him. This led him to establish a 30,000-book capacity library in his home country, Ghana.

The contrast between his higher education experience and the classrooms of his youth in Ghana – often without chairs or books is the fundamental driving force behind Lead For Ghana. With Lead For Ghana, Daniel hopes to help build a country where every child, irrespective of their socioeconomic background, has the opportunity to attain an excellent education.



**Daniel Dotse**  
Co-Founder and CEO,  
Lead For Ghana (LFG)



# Profiles for Panels

## TOPIC Rethinking Inclusivity in Education Panel

**Dr Odaymat** was born in Ghana and completed her primary education in West Africa. Before joining the world of International Education, she was involved in developing and managing education and protection programmes for children of all ages in Africa and the Middle East. As a United Nations Officer and a consultant, she designed and managed programmes in Early Childhood Development, Mental Health, Child Labor, in addition to Education in Emergencies and Conflict Areas.

She has also been involved in designing innovative learning spaces and training programs for teachers and administrators, in addition to working with governments on the ratification of education and protection policies. Dr Odaymat brings that global experience to Al-Rayan International School where she works with 187 staff to ensure that the students enjoy the highest standards in international education, with a focus on international-mindedness, wellbeing, personalised and service learning.

Dr Fatma Odaymat has a Bachelor Degree in Biology and is a Medical Doctor by training. She also holds a Masters in Public Health, a certification in Educational Leadership and a Masters in International Education Policy from Harvard Graduate School of Education.



**Dr Fatma Odaymat**  
Director, Al-Rayan International School



**Alex Amankwah**  
Officer in charge of Learning Disabilities, Special Education Division, GES

**Alex Amankwah** is a highly skilled professional specializing in Neuro-Linguistic Programming (NLP). With a deep passion for education and a focus on supporting learners with specific learning difficulties, Alex currently serves as the Unit Head of Learning Disabilities at the Ghana Education Service Headquarters - Special Education Division. In this pivotal role, Alex plays a crucial part in developing and implementing strategies to assist students with learning disabilities.

Additionally, Alex holds the esteemed position of Director at the Top Performers Institute, an organization dedicated to professional and self-development training programs for both students and teachers. Through this role, Alex has made a significant impact by coaching over 10,000 teachers from both public and private institutions on effective techniques to manage and support learners with specific learning difficulties.

**Sonia** is the Principal of Multikids Inclusive Academy in Accra and has a longstanding interest and expertise in providing effective intervention for children and adults with dyslexia. She is a UK qualified Speech & Language Therapist and Teacher with over 20 years' experience.

She is also a Dyslexia Specialist and trained under the auspices of the late Professor Beve Hornsby, one of the UK's pioneers in dyslexia intervention and author of the Alpha to Omega programme. Prior to moving to Ghana in 2018, Sonia was the Development Director of Fairley House School, London's largest school for children with specific learning disorders (dyslexia/dyspraxia/ADHD) where she worked for 7 years.



**Sonia Aboagye**  
Principal, Multikids Inclusive Academy

# Peter Anum

Inclusive Education Consultant for British Council



Peter is a seasoned facilitator, course developer, and productivity coach, Peter is dedicated to improving personal effectiveness, leadership, and team dynamics. His extensive experience includes impactful work with renowned organizations National Youth Authority, and Commonwealth Youth Programme. His global involvement spans the UK, Australia, Kenya, Morocco, Malaysia, Trinidad & Tobago, Sierra Leone, Liberia, Ghana, Cameroon, Ethiopia, Turkey, among others.

Peter's outstanding contributions have earned him international recognition, including the 2011 Outstanding Services to Youth Engagement & Voluntary Services award in the UK, the 2014 Commonwealth Youth Worker Award, and nominations for the 40 Under 40 and 50 Most Influential Young Leaders in Ghana in 2017.

# DES Dyslexia Education Stakeholders FORUM 2023

**Theme: Rethinking Inclusivity in Education, Addressing the Needs of Dyslexic Students**



## Africa Dyslexia Organisation



+233 24 184 3287  
+233 20 636 3876



info@africadyslexia.org  
www.africadyslexia.org



SSNIT Emporium, Right Wing,  
7th Floor Airport City, Accra-Ghana

 @africadyslexiaorg

 **BRITISH  
COUNCIL**